





Key Vocabulary Overview

season	a part of the year
winter	the season before spring and after autumn
weather	the conditions of what it is like outside, including rain, snow and how hot or cold it is
daylight	when it is light outside
night	when there is no daylight
frost	when it is very cold, a thin layer of ice called frost covers things like grass outside

rain	
cloud	
sun	
snow	

The Four Seasons

In a year, there are four **seasons**:



spring

summer

autumn

winter

Weather in Winter

As the **season** changes from autumn to **winter**, the **weather** also begins to change.



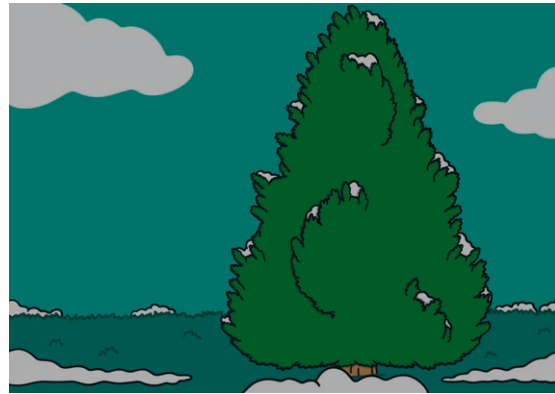
It starts to get colder. You might find **frost** on the ground and it sometimes **snows**. During both autumn and **winter**, there is sometimes a lot of **rain** and it can be windy. It might not be warm in **winter** but it can still be **sunny**.



Nature in Winter



Some trees lose all their leaves during autumn and **winter**.



Some trees have leaves through all the **seasons**.



Many animals are less active during **winter**. They will often stay in their home to keep warm and only come out to find food.



You might see **frost** on plants, pine cones on the ground and birds looking for food.

Clothing in Winter

During **winter**, you will need clothes that keep you warm and dry, such as a thicker coat, gloves and a hat.



Daylight in Winter

Winter is the **season** with the fewest **daylight** hours. It gets light later in the morning and begins to get dark earlier in the afternoon. That is why some people may describe the days in **winter** as being 'short'.

