

Key Vocabulary

material	what something is made of, such as wood or plastic
object	a thing that can be seen and touched
soft	easy to cut, fold or change the shape of
hard	not easily scratched or dented
shiny	smooth and reflects light
dull	not bright or shiny
smooth	feels and looks even
rough	feels and looks uneven
light	might feel easy to lift
heavy	might feel hard to lift
melt	when a material changes from a solid into a liquid
freeze	when a material changes from a liquid into a solid
ice	frozen water
water	a type of liquid material

float

to stay on the surface of a liquid

sink

to fall below the surface of a liquid

absorb

to take liquid in

transparent

can be seen through

opaque

cannot be seen through



liquid



solid



metal



wood



plastic



glass



fabric



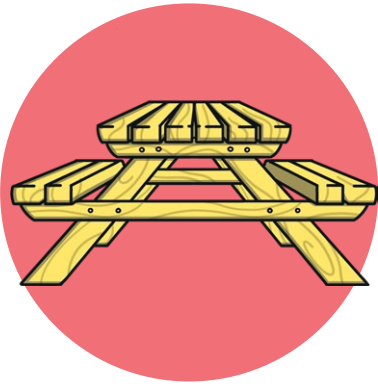
wool



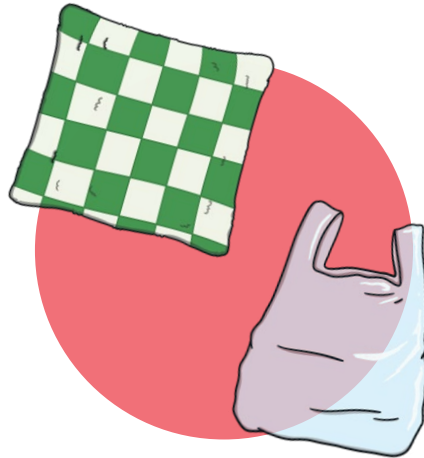
rock

Sorting Materials

We can sort the **materials** that **objects** are made of based on what is similar or different about them.

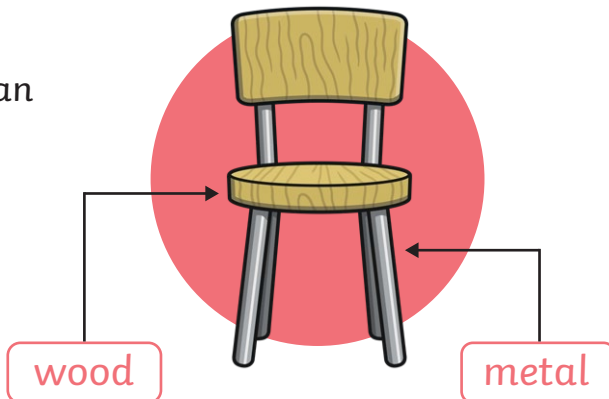


hard



soft

Some **objects** are made from more than one **material**.



Describing Materials



Rock is sometimes **hard** and sometimes crumbly. It can be **smooth** or **rough**.



Most windows are made of **transparent glass**. This means we can see through them.



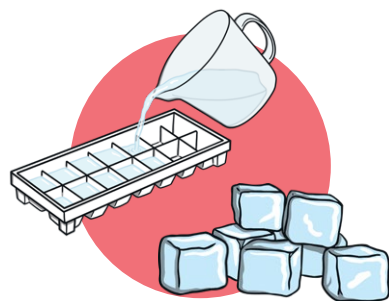
This sponge is **absorbent**. It gets heavier as it **absorbs** (takes in) **water**. If you then squeezed it, some **water** would drip out.



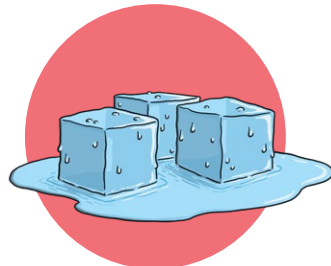
The **wood** this door is made of is **opaque**. No light passes through it.

Melting and Freezing

When **liquid water** is put in the freezer, it gets colder and colder until it **freezes** and turns into **solid ice**.



When **solid ice** is heated and gets warm, it **melts** and turns into **liquid water**.



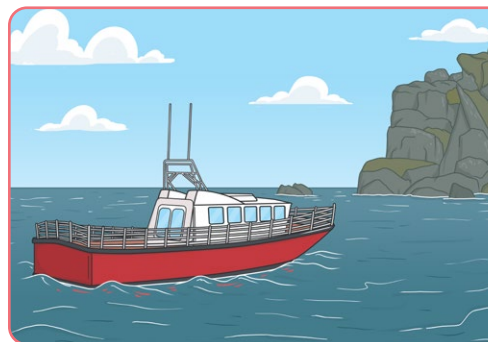
When **water freezes**, it turns into **ice**.



When **ice** is heated, it **melts** and turns into **water**.

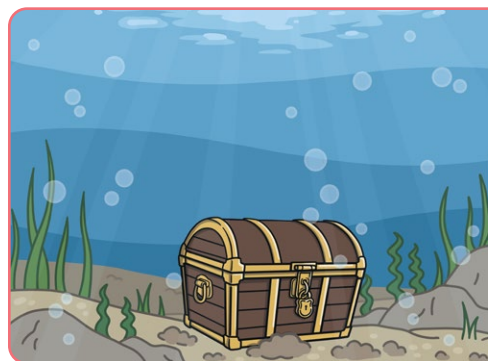
Floating and Sinking

If something **floats**, it means that when it is put on **water** it stays on top of it.



This boat is **floating** on the **water**.

If something **sinks**, it means that when it is put on **water** it does not stay on top of it. Instead, it **sinks** below the top of the **water** and will then **sink** all the way to the bottom.



This treasure chest **sinks** and has sunk to the bottom of the ocean floor.