

## Key Vocabulary Overview

<b>mammal</b>	an animal that grows hair or fur on its body
<b>bird</b>	a type of animal that has a beak, feathers, legs and wings
<b>deciduous tree</b>	trees that lose their leaves during autumn/winter
<b>evergreen tree</b>	trees that do not lose their leaves during autumn/winter
<b>habitat</b>	the place in which a plant or animal lives
<b>carnivore</b>	mostly eats other animals (meat)
<b>herbivore</b>	only eats plants
<b>omnivore</b>	eats both plants and other animals
<b>Arctic plants</b>	plants that are able to grow in the Arctic
<b>hibernate</b>	going into a very deep sleep somewhere safe during winter

<b>reptile</b>	a type of animal with dry scales covering its body
<b>cactus</b>	a type of plant that often has spines
<b>desert</b>	a place that has very little rainfall
<b>rainfall</b>	measurement of how much it has rained
<b>ocean</b>	a large area of salt water
<b>fish</b>	live in water, have gills and fins
<b>seagrass</b>	a type of plant that grows in water
<b>woodland</b>	a large area that has lots of trees
<b>fern</b>	plant with a long stem and often feathery leaves
<b>moss</b>	plant often found in damp places

<b>microhabitat</b>	a very small habitat
<b>insect</b>	a minibeast with six legs and three body sections
<b>spider</b>	a minibeast with eight legs
<b>snail</b>	a small animal with a soft body and hard shell
<b>minibeast</b>	a type of animal, usually very small
<b>diet</b>	the food that an animal usually eats
<b>food chain</b>	shows how energy is passed from one living thing to another
<b>living</b>	living things, such as animals and plants, are alive
<b>dead</b>	isn't alive any more
<b>never alive</b>	neither living nor dead

## Our Local Area

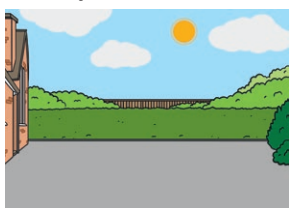
**Habitats** in your local area might include:



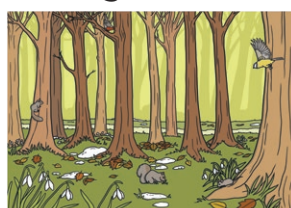
a pond



a garden

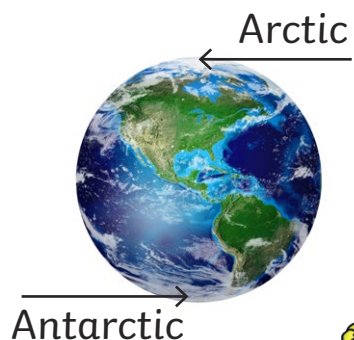


a playground



some woodland

## Polar Habitats



The Arctic and Antarctic are polar **habitats**.

They can be very cold, icy and snowy. Only certain animals and plants are able to survive there.



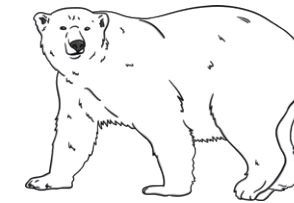
Antarctic hair grass



Arctic poppy



penguin (Antarctic)



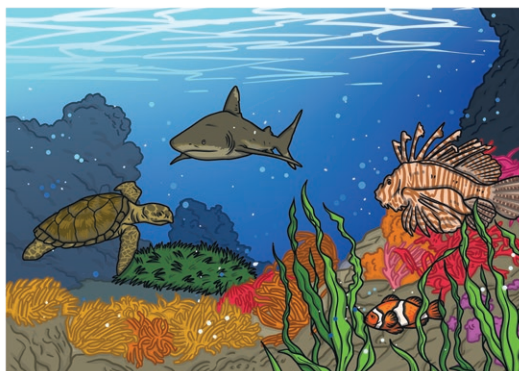
polar bear (Arctic)

## Ocean Habitats

Most of planet Earth is covered by **oceans**.

Many **fish** live in **oceans** but other types of animals do, too.

Plants provide food for many **ocean** animals.



## Desert Habitats

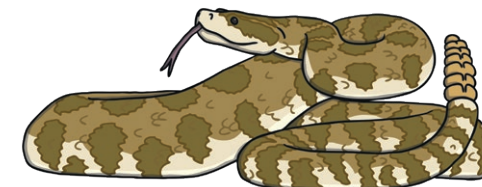
**Deserts** are very dry and can be very hot or cold.

Most plants that grow in the **desert** can survive for a long time without water.

The thick stem on a **cactus** is able to hold water.



Animals that live in warm **deserts** can survive very hot weather.



## Woodland Habitats

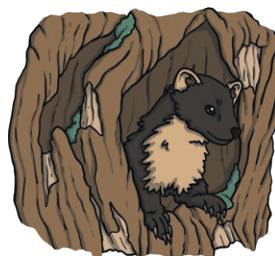
Many **trees** need lots of space to grow. **Moss** also grows well here because it is often shady and damp.



Many animals eat the food that comes from **woodland** plants.

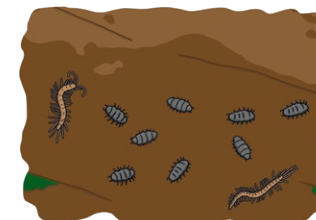


**Trees** can provide shelter for animals.



## Microhabitats

Different **minibeasts**, such as **insects**, **spiders**, **snails** and worms, can be found in different **microhabitats** depending on what they need to survive.



## Animal Diets

**Carnivores** eat other animals (meat).

**Herbivores** eat mostly or only plants.

**Omnivores** eat both plants and meat.

Animals that live in different **habitats** often eat different types of food.

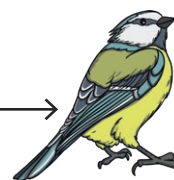
## Food Chains



leaves



caterpillar



bird

In this **food chain**, the caterpillar gets energy from the leaves it eats. The **bird** gets energy from the caterpillar it eats.

## Living, Dead, Never Alive

**Living** things need to have their needs met to survive.



When something is no longer alive, it is **dead**.



Some things have **never been alive**.

